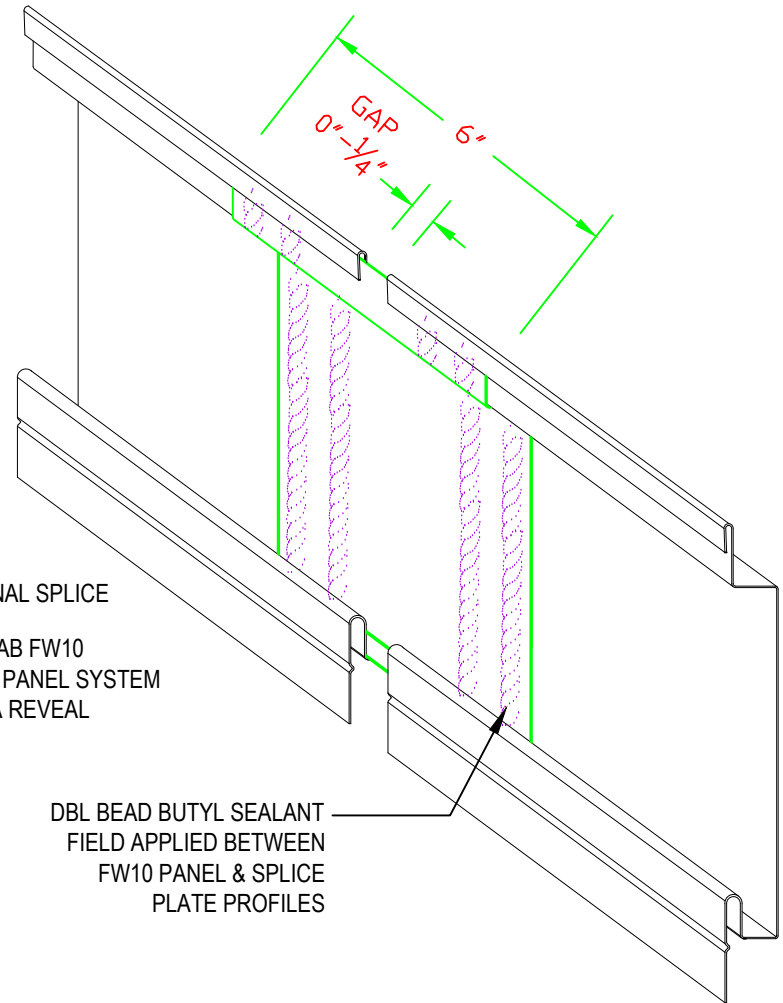
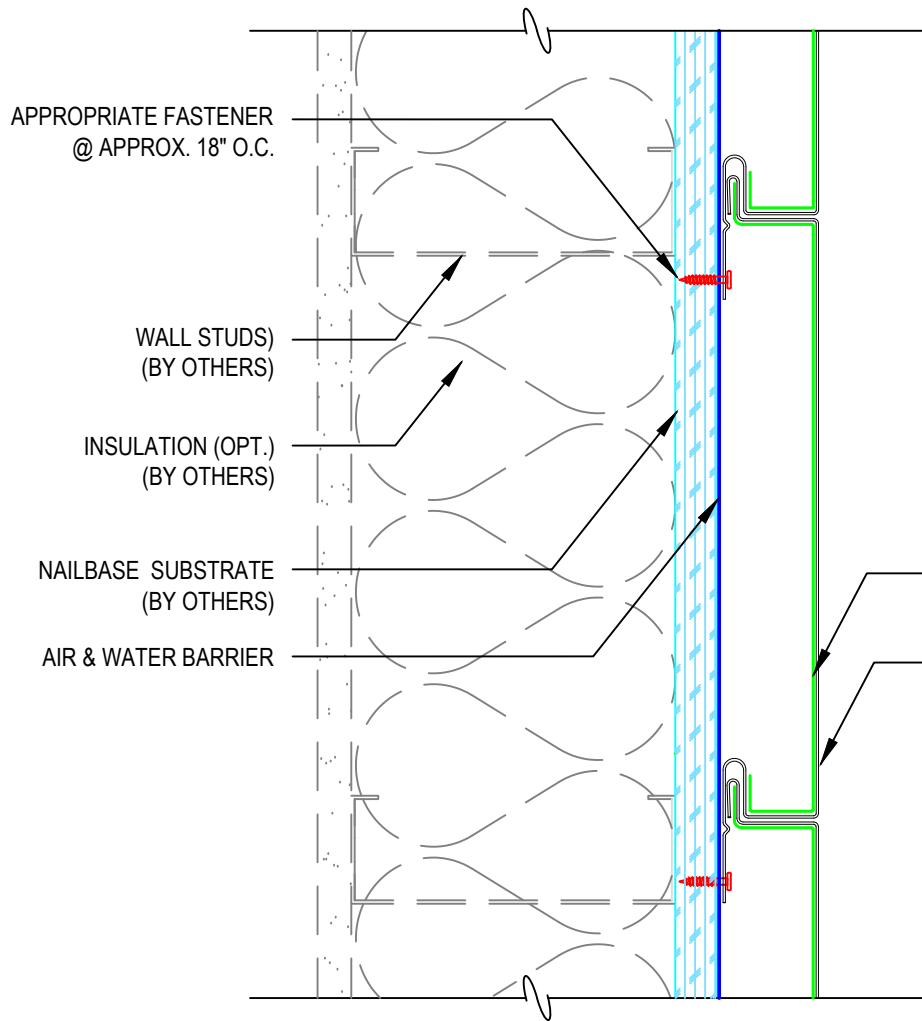


**FLUSH WALL JOINT DETAIL**

2529 WEST JACKSON ST, PHX, AZ 85009  
 PH: (602) 275-1676 FAX: (602) 275-1739

PANEL SYSTEM: <b>FW10</b>		DETAIL NO. <b>FWJD</b>
ISSUE / REVISION DATE: 1/27/2014	NOT TO SCALE	



**FLUSH WALL INTERNAL SPLICE DETAIL**

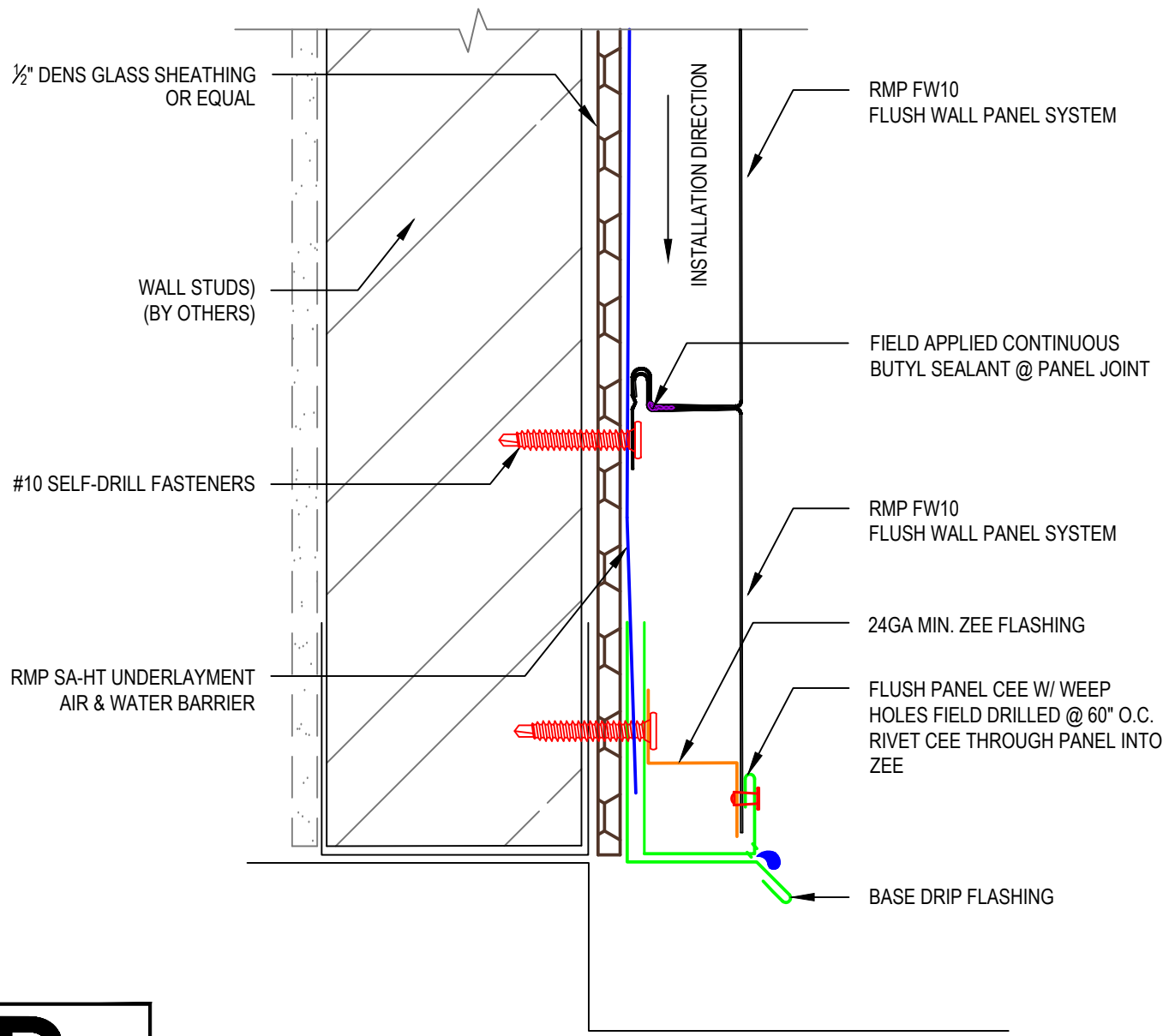
2529 WEST JACKSON ST, PHX, AZ 85009  
 PH: (602) 275-1676 FAX: (602) 275-1739

PANEL SYSTEM: **FW10**

ISSUE / REVISION DATE:  
 1/27/2014

NOT TO SCALE

DETAIL NO.  
**FWSPD**



**HOR. FLUSH WALL BASE W/ CEE DETAIL**

2529 WEST JACKSON ST, PHX, AZ 85009  
 PH: (602) 275-1676 FAX: (602) 275-1739

PANEL SYSTEM: <b>FW10</b>		DETAIL NO. <b>HFWBC</b>
ISSUE / REVISION DATE: 1/27/2014	NOT TO SCALE	

1/2" DENS GLASS SHEATHING  
OR EQUAL

WALL STUDS)  
(BY OTHERS)

#10 SELF-DRILL FASTENERS

RMP SA-HT UNDERLAYMENT  
AIR & WATER BARRIER

RMP FW10  
FLUSH WALL PANEL SYSTEM

FLUSH PANEL CEE W/ WEEP  
HOLES FIELD DRILLED @ 60" O.C.

BASE DRIP FLASHING

**RMP**  
**ROLLFAB**  
METAL PRODUCTS  
www.rollfabmetal.com

**VER. FLUSH WALL BASE W/ CEE DETAIL**

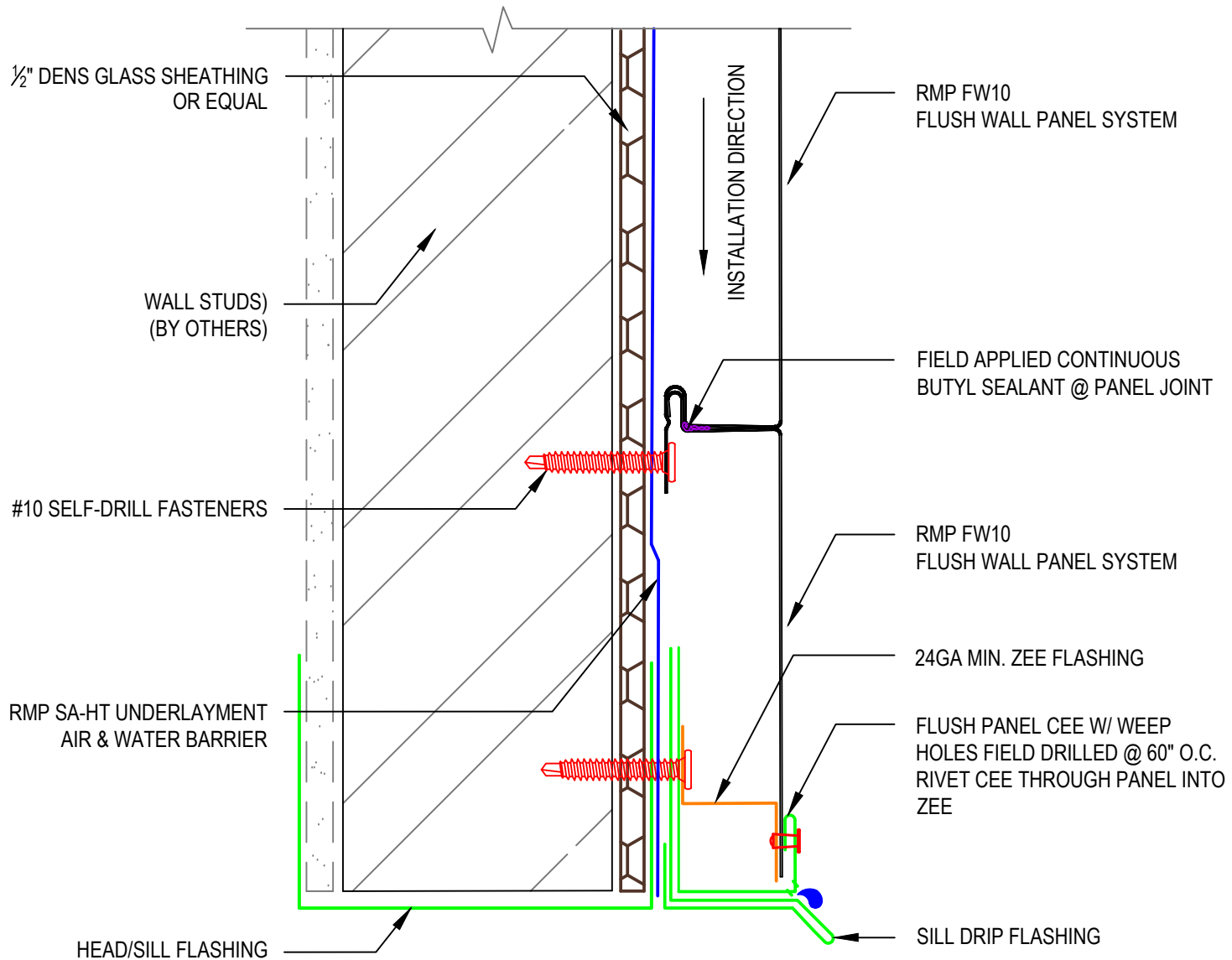
2529 WEST JACKSON ST, PHX, AZ 85009  
PH: (602) 275-1676 FAX: (602) 275-1739

PANEL SYSTEM: **FW10**

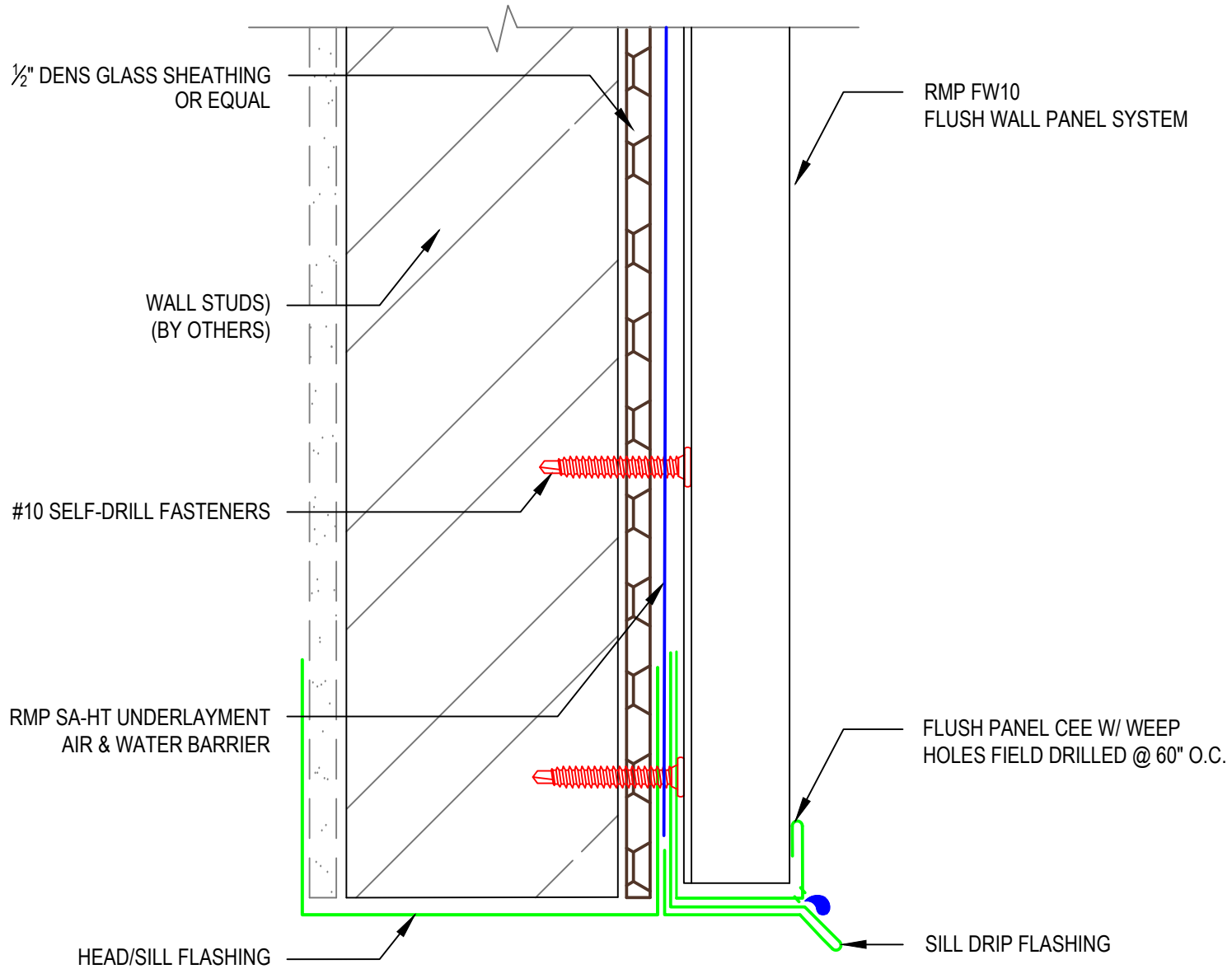
ISSUE / REVISION  
DATE:  
1/27/2014

NOT TO SCALE

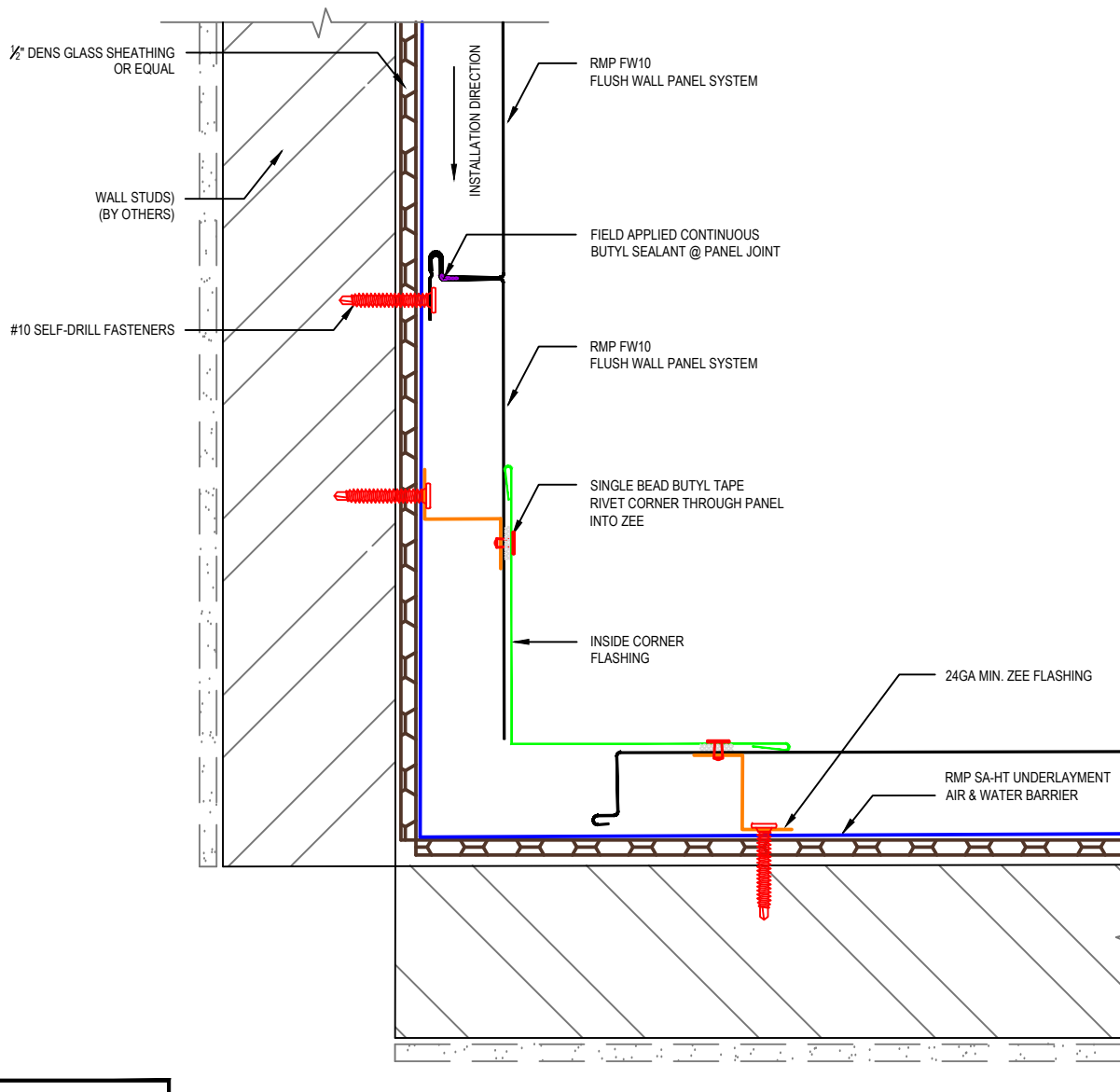
DETAIL NO.  
**VFWBC**



**HOR. FLUSH WALL HEAD/SILL DETAIL**



**VERT. FLUSH WALL HEAD/SILL DETAIL**



**FLUSH WALL INSIDE CORNER DETAIL**

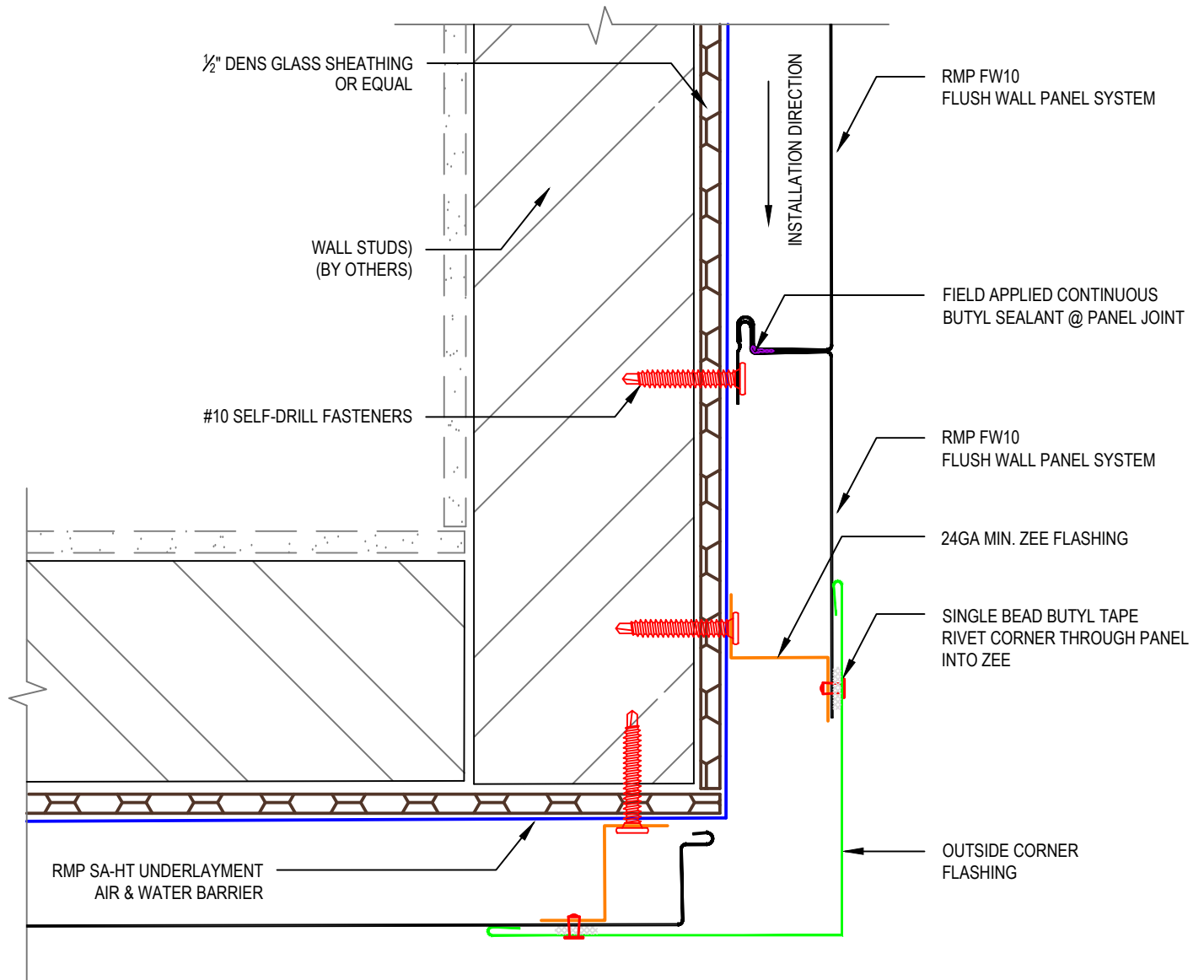
2529 WEST JACKSON ST, PHX, AZ 85009  
 PH: (602) 275-1676 FAX: (602) 275-1739

PANEL SYSTEM: **FW10**

ISSUE / REVISION  
 DATE:  
 1/27/2014

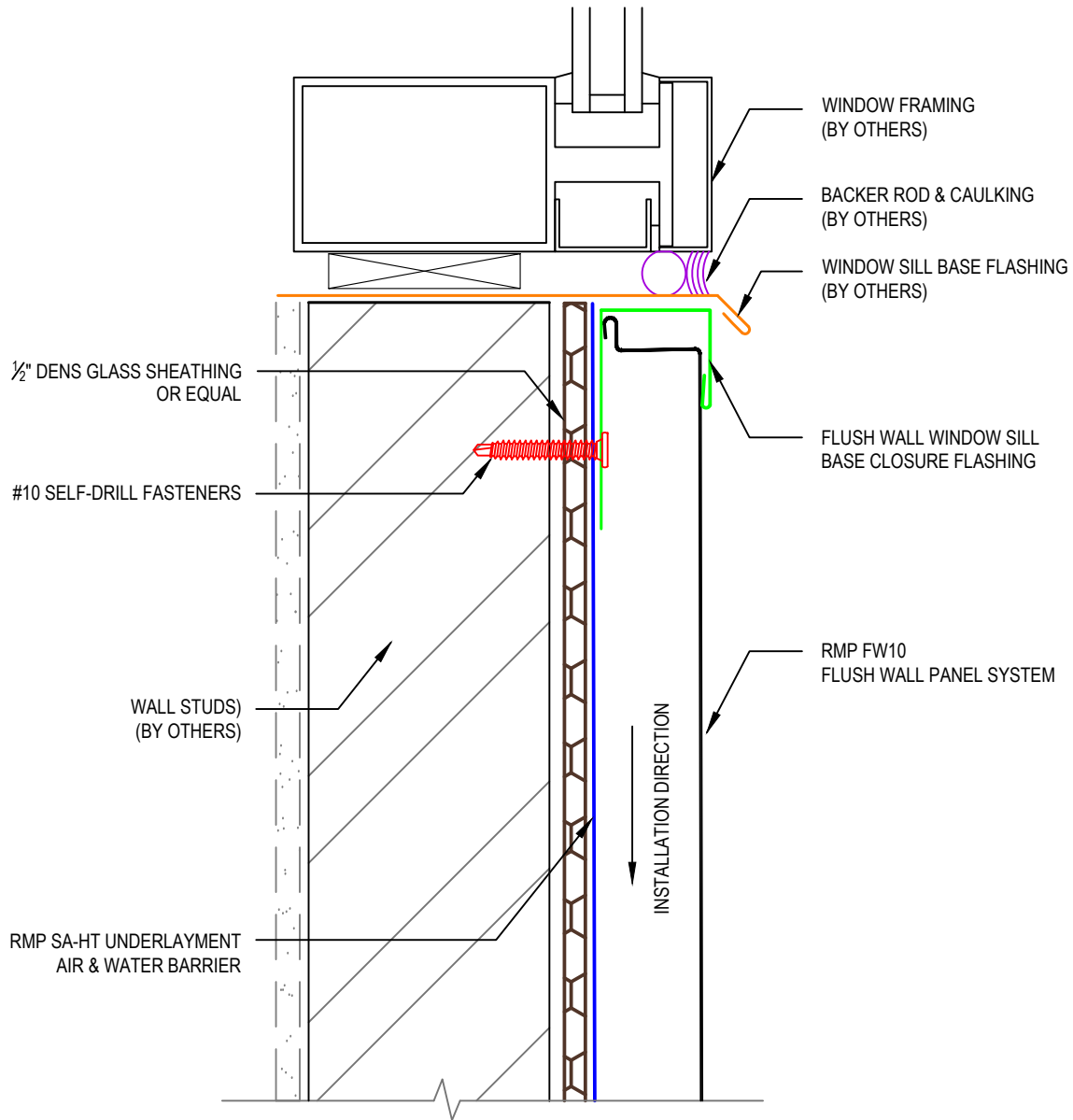
NOT TO SCALE

DETAIL NO.  
**FWISC**



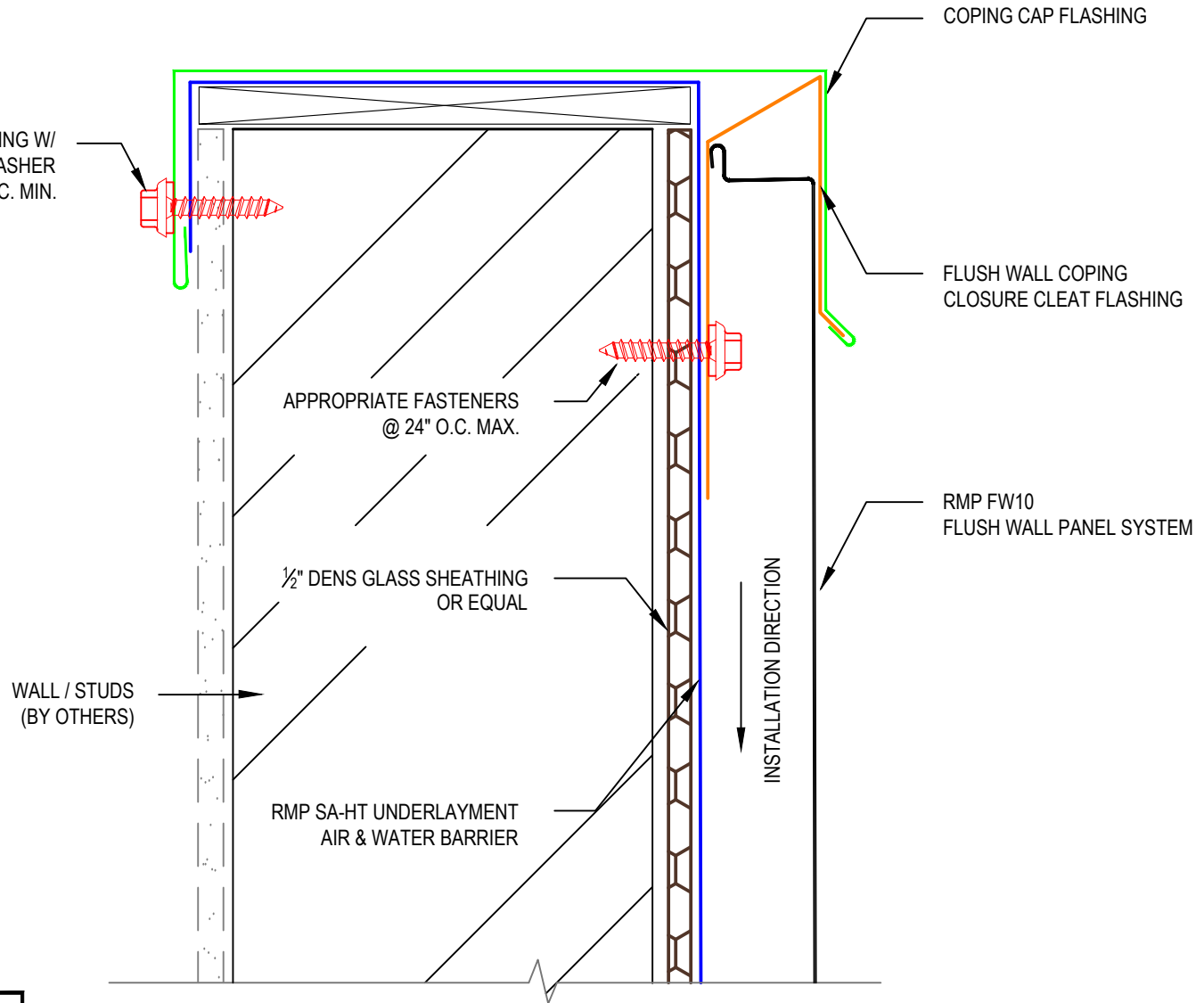
**FLUSH WALL OUTSIDE CORNER DETAIL**



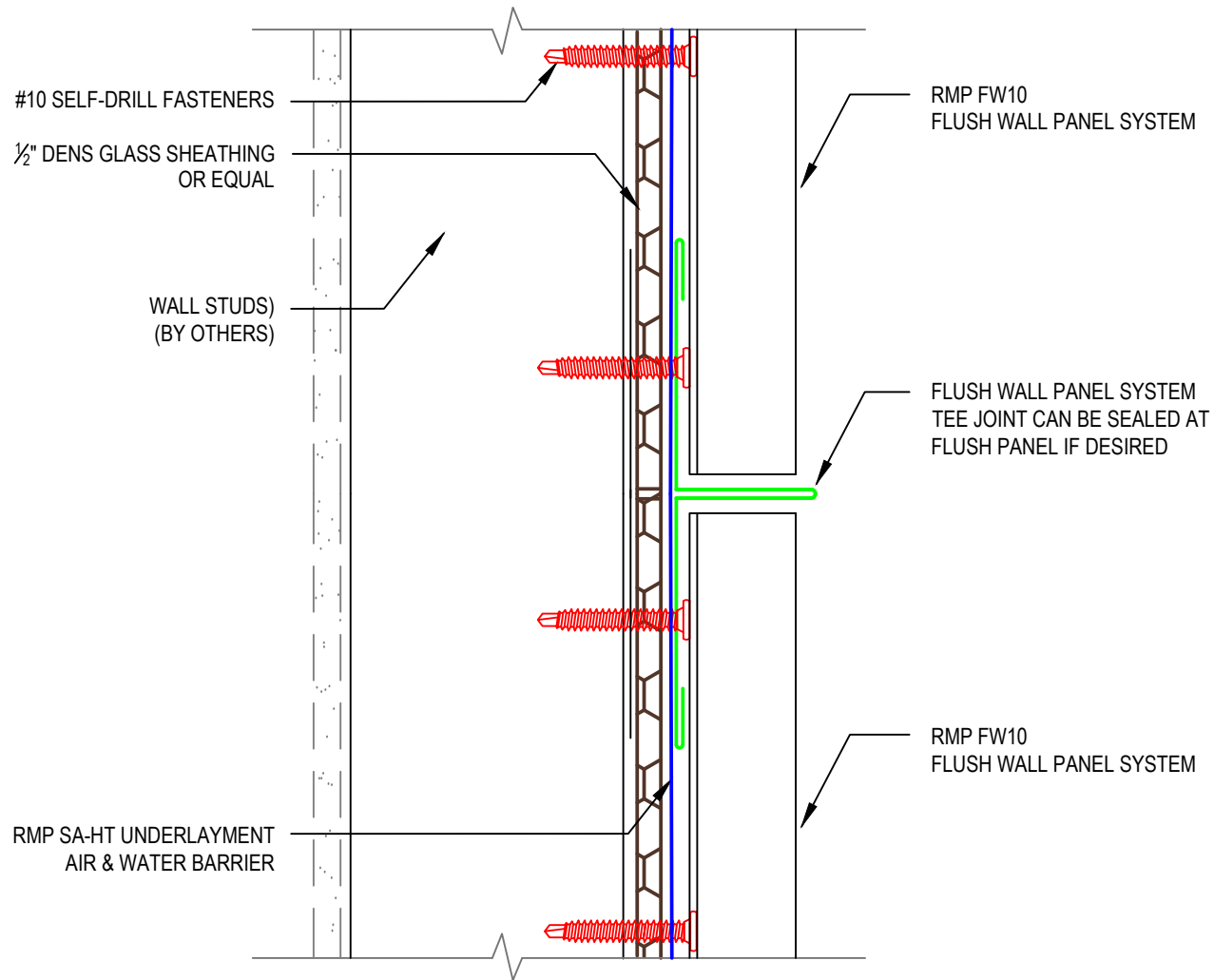


**FLUSH WALL WINDOW SILL BASE DETAIL**

ATTACH COPING W/  
APPROPRIATE NEO/ WASHER  
FASTENERS @ 24" O.C. MIN.



**FLUSH WALL COPING CLOSURE DETAIL**



**FLUSH WALL TEE CLOSURE DETAIL**

APPROPRIATE FASTENER  
@ APPROX. 18" O.C.

WALL STUDS)  
(BY OTHERS)

INSULATION (OPT.)  
(BY OTHERS)

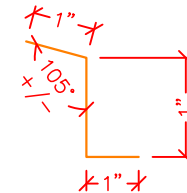
NAILBASE SUBSTRATE  
(BY OTHERS)

AIR & WATER BARRIER

INSTALL THE 105° EDGE OF THE ZEE  
PARALLEL TO FW10 PANEL AT THE  
EXACT CENTER OF THE PANEL FACE.  
ZEES MUST BE SHIMMED TO PLUMB  
AND INSTALLED IN A CONTINUOUS  
MANNER BY BUTTING SEGMENTS  
TOGETHER. DO NOT OVERLAP THE  
ZEES AS THIS WILL INDUCE OIL-CANNING

ROLLFAB FW10 FLUSH PANEL  
WILL HAVE A SLIGHT OUTWARD  
BOWE TO DIRECT THERMAL  
EXPANSION MORE UNIFORMLY

FW10 DEFLECTION  
ZEE DIMENSIONS



**FLUSH WALL DEFLECTION ZEE**

2529 WEST JACKSON ST, PHX, AZ 85009  
PH: (602) 275-1676 FAX: (602) 275-1739

PANEL SYSTEM: <b>FW10</b>	
ISSUE / REVISION DATE: 1/27/2014	DETAIL NO. <b>FWDZ</b>
NOT TO SCALE	