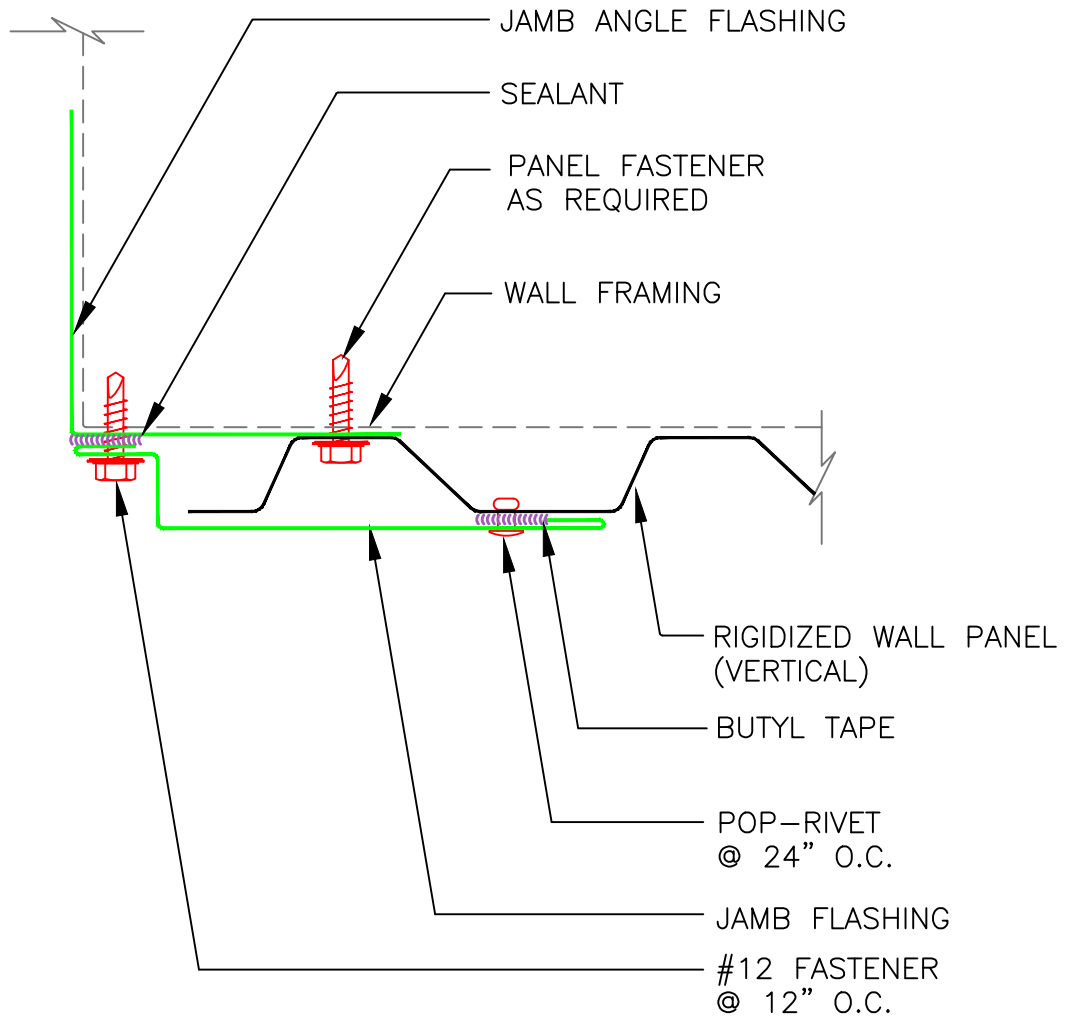


RIGIDIZED WALL PANEL PROFILE



**IT IS RECOMMENDED, THAT A MANUFACTURE APPROVED "AIR & WATER/VAPOR" MEMBRANE BE APPLIED TO THE WALL, BEHIND THE WALL PANEL SYSTEM.

RMP
ROLLFAB
 METAL PRODUCTS
 www.rollfabmetal.com

VERTICAL JAMB FLASHING

2529 WEST JACKSON ST, PHX, AZ 85009
 PH: (602) 275-1676 FAX: (602) 275-1739

PANEL SYSTEM: **RIGIDIZED WALL**

ISSUE / REVISION DATE:
 01/08/2013

NOT TO SCALE

DETAIL NO.
RWVJF