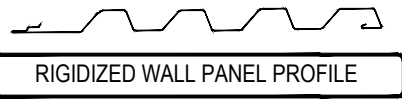
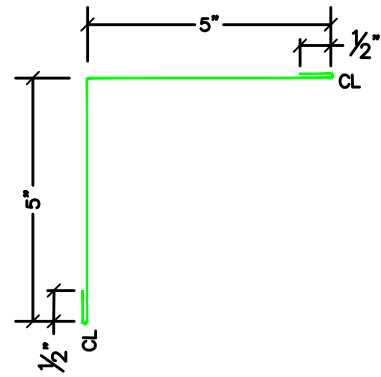


PANEL FASTENER  
AS REQUIRED

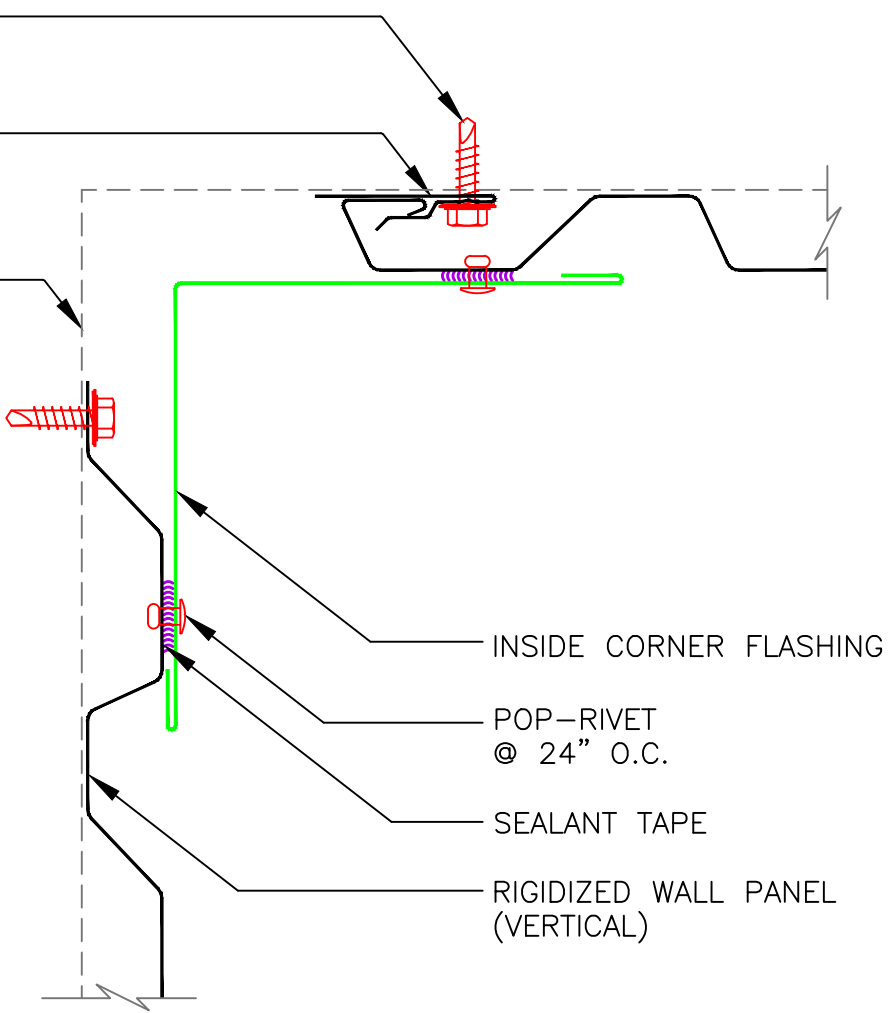
USE CROPED END TO  
START NEW PANEL

WALL FRAMING

INSIDE CORNER FLASHING



RIGIDIZED WALL PANEL PROFILE



INSIDE CORNER FLASHING

POP-RIVET  
@ 24" O.C.

SEALANT TAPE

RIGIDIZED WALL PANEL  
(VERTICAL)

**\*\*IT IS RECOMMENDED, THAT A MANUFACTURE APPROVED "AIR & WATER/VAPOR" MEMBRANE BE APPLIED TO THE WALL, BEHIND THE WALL PANEL SYSTEM.**



**VERTICAL INSIDE CORNER**

2529 WEST JACKSON ST, PHX, AZ 85009  
PH: (602) 275-1676 FAX: (602) 275-1739

PANEL SYSTEM: <b>RIGIDIZED WALL</b>	
ISSUE / REVISION DATE: 01/08/2013	DETAIL NO. <b>RWVIC</b>
NOT TO SCALE	