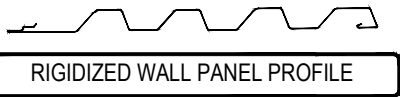
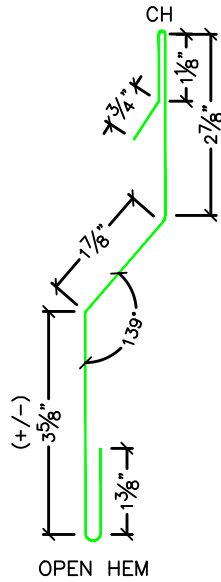


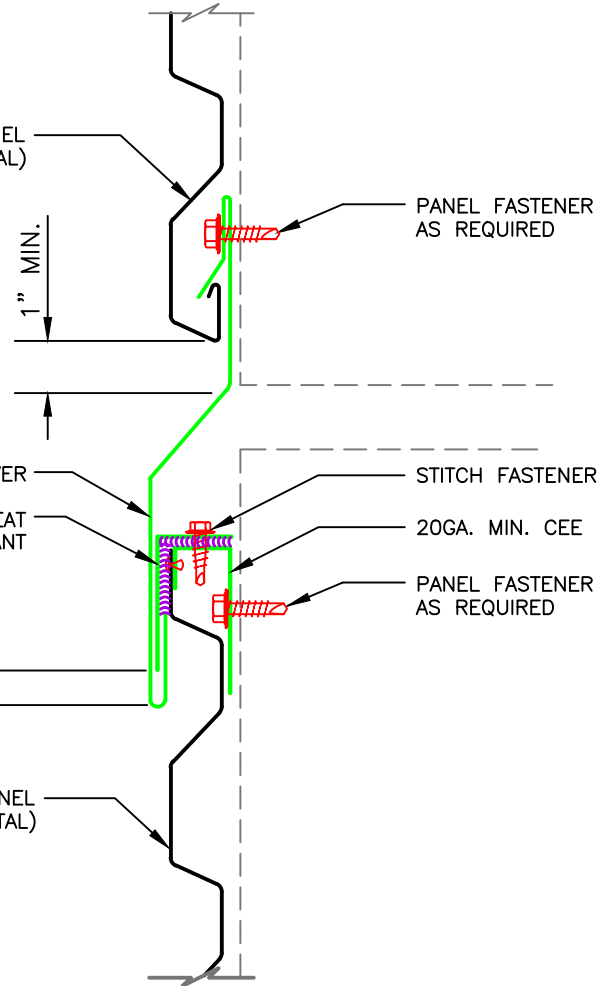
EXPANSION COVER



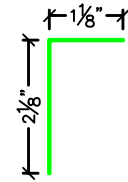
RIGIDIZED WALL PANEL
(HORIZONTAL)

EXPANSION COVER
EXPANSION CLEAT
SET IN BUTYL SEALANT

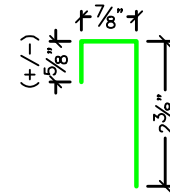
RIGIDIZED WALL PANEL
(HORIZONTAL)



EXPANSION CLEAT



20GA. MIN. CEE



****IT IS RECOMMENDED, THAT A MANUFACTURE APPROVED "AIR & WATER/VAPOR" MEMBRANE BE APPLIED TO THE WALL, BEHIND THE WALL PANEL SYSTEM.**



HORIZONTAL EXPANSION JOINT

2529 WEST JACKSON ST, PHX, AZ 85009
PH: (602) 275-1676 FAX: (602) 275-1739

PANEL SYSTEM: RIGIDIZED WALL	
ISSUE / REVISION DATE: 01/08/2013	DETAIL NO. RWHEJ
NOT TO SCALE	