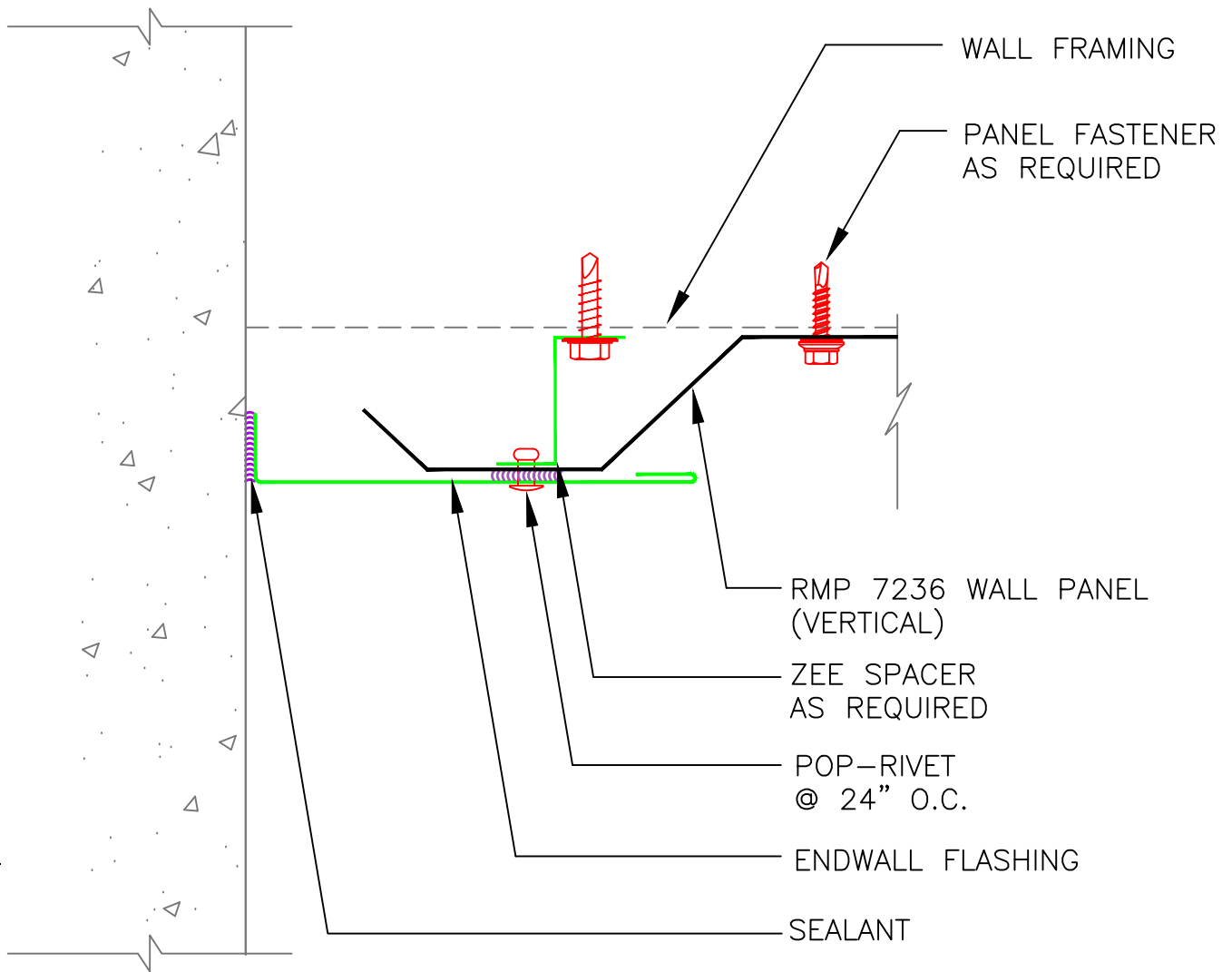
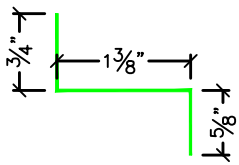


ZEE SPACER



****IT IS RECOMMENDED, THAT A MANUFACTURE APPROVED "AIR & WATER/VAPOR" MEMBRANE BE APPLIED TO THE WALL, BEHIND THE WALL PANEL SYSTEM.**



VERTICAL ENDWALL FLASHING

2529 WEST JACKSON ST, PHX, AZ 85009
PH: (602) 275-1676 FAX: (602) 275-1739

PANEL SYSTEM: RMP 7236	
ISSUE / REVISION DATE: 05/03/2014	DETAIL NO. 72VEW
NOT TO SCALE	