

**Flashings & Trim**

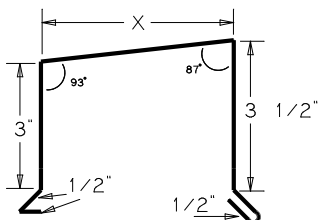
**Standard Coping System**

Customer \_\_\_\_\_  
 Job Name \_\_\_\_\_  
 Phone/Fax \_\_\_\_\_

Color \_\_\_\_\_  
 Gauge \_\_\_\_\_  
 PO# \_\_\_\_\_

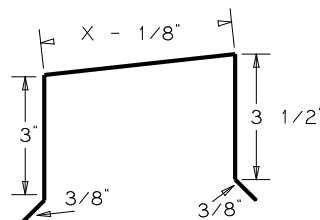
**ROLLFAB CC-1**

Quantity \_\_\_\_\_  
 Length/pc \_\_\_\_\_ (120" standard)  
 Roof Pitch \_\_\_\_\_: 12  
 Material \_\_\_\_\_



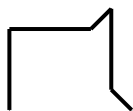
**ROLLFAB CC-2**

Quantity \_\_\_\_\_  
 Length/pc \_\_\_\_\_ (120" standard)  
 Roof Pitch \_\_\_\_\_: 12  
 Material \_\_\_\_\_



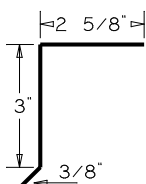
**Cleat Options: ( 20 gauge Galvanized Standard)**

**CC/CLT 1**



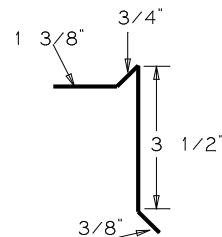
Full length or Sectional  
 16" Wide Minimum

**CC/CLT 2**



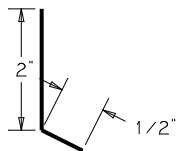
Full Length Rear Cleat

**CC/CLT 3**



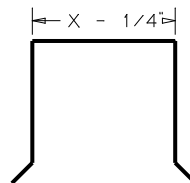
Front Riser Cleat

**CC/CLT 4**



Full Length Face Cleat

**CC/CLT 5**



Full Length or Sectional  
 @ 16" Wide Minimum